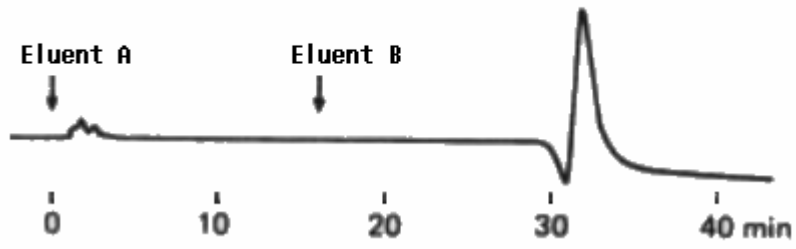


**Sample: Fibronectin  
(Human plasma, Green Cross)**



Column : Shodex AFpak AGE-894 (8.0mmID\*50mm)  
Eluent : (A); 50mM Tris-HCl buffer (pH7.4) + 0.01M NaCl  
(B); (A) + 4M urea  
Step gradient: (A) to (B)  
Flow rate : 0.3mL/min  
Detector : UV(280nm)  
Column temp. : Room temp.